

## Port and Terminal Information Book

The port is situated in the bay of Fagervik at Inkoo district (60°01'N, 23°55'E). The distance to Helsinki by road is about 60 km, to Lohja about 30 km, to Lahti about 150 km, to Turku about 120 km and to Tampere about 200 km.

Max. draught in the common fairway 13 m.

Max draught in turning area 8,6 m (sounded depth 9,5 m).

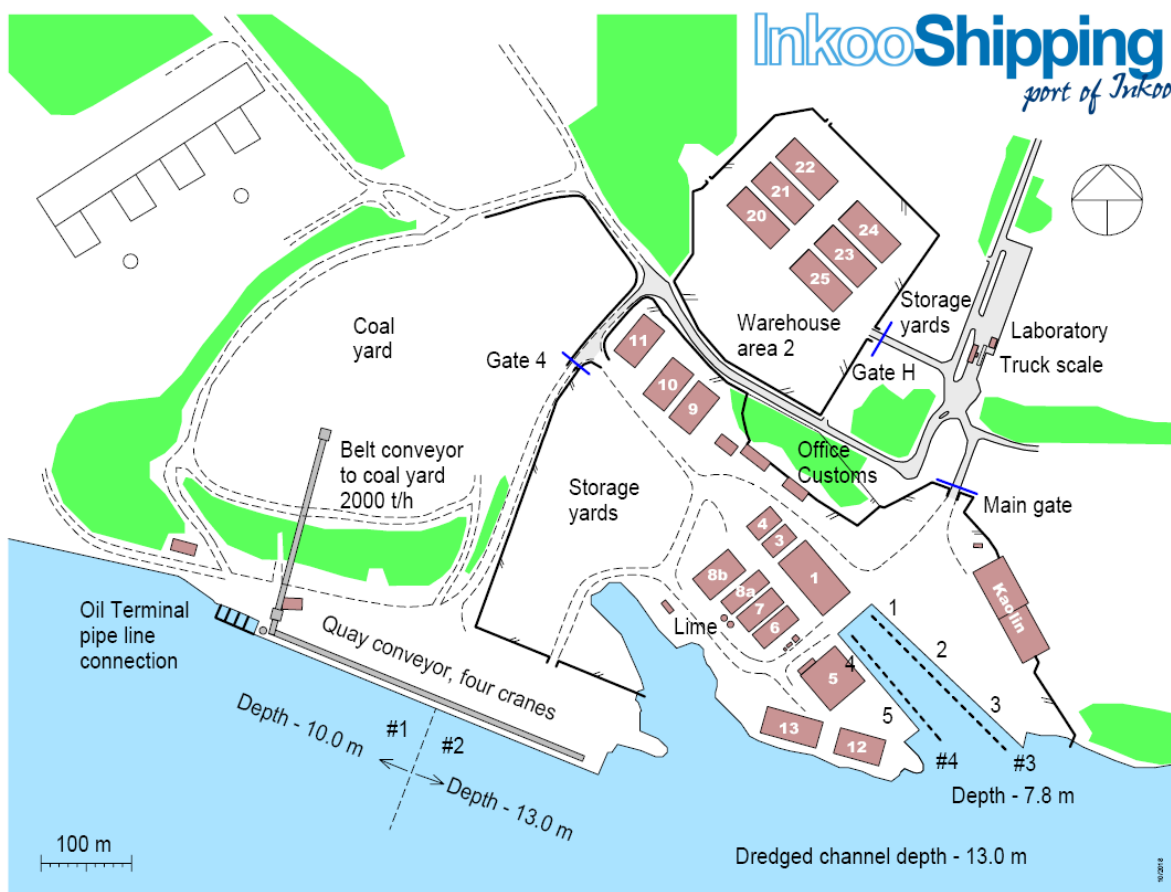
Free air draught.

Water level changes in the area: approx. -0,4 m, +0,8 m. No tide.

Draught in basin: 7,8 m.

Quay 3 length 225 m. Quay 4 length 145 m.

Quay 3 is divided in three and quay 4 in two sections.



With reference to Blu-code Appendix 1.

Relative documents: Port Regulations

Instructions for vessel waste disposal.